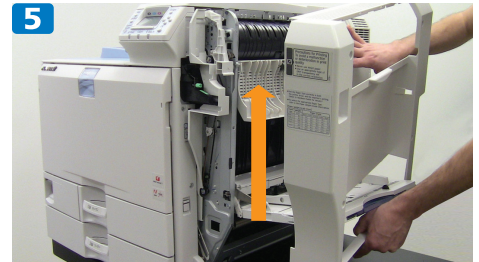
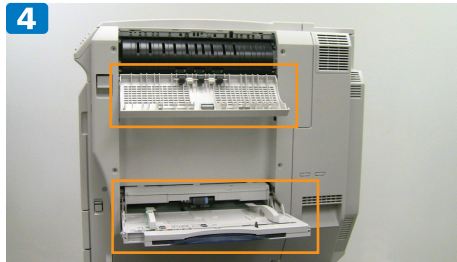
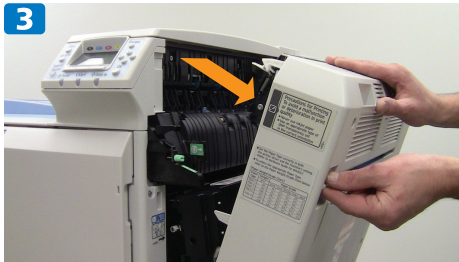
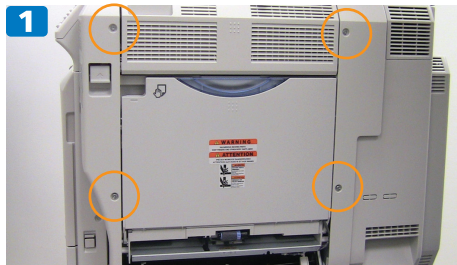


Enterprise Feeder Upgrade

1 Duplex Cover

Remove 4 screws from the duplex cover. Lift the handle to open the duplex door. Then open the top door & by-pass tray. Remove the cover by lifting upward.

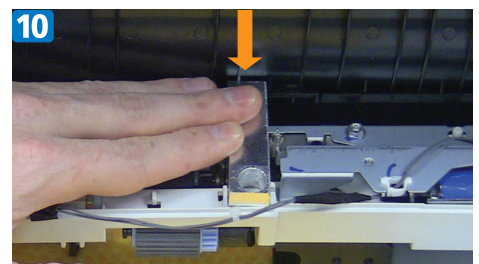
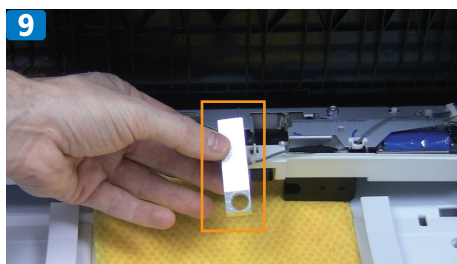
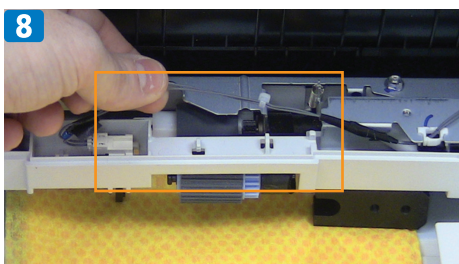
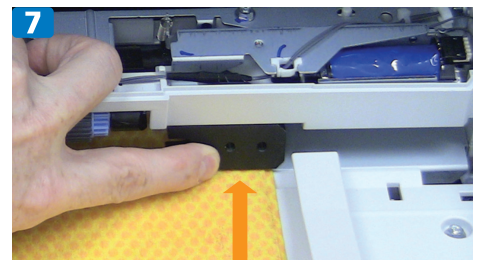
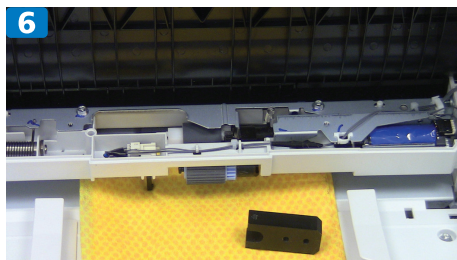
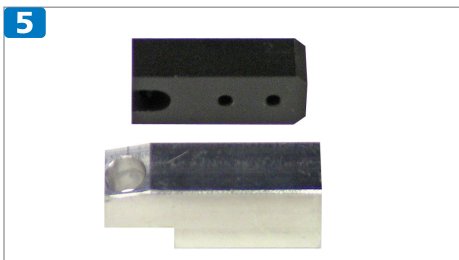
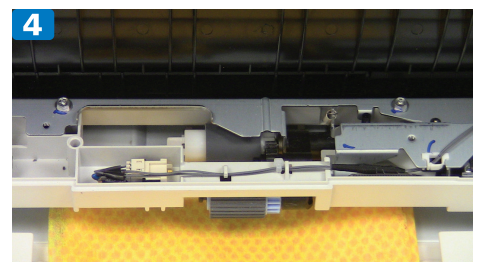
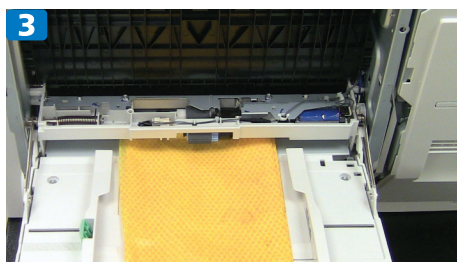
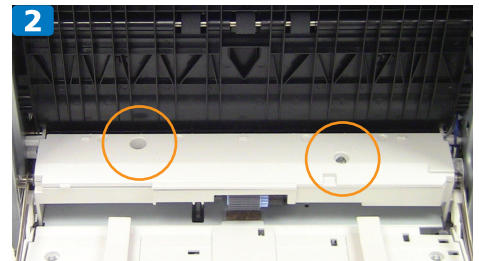
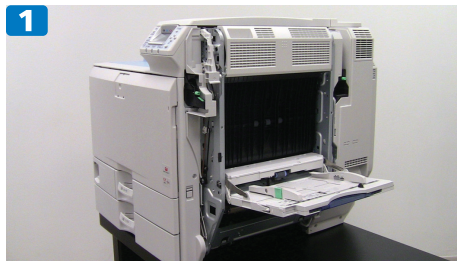


2 By-Pass Cover

1 thru 2: Remove 2 screws from the by-pass tray wing on the printer and lift the cover off.

3 thru 4: Place a thin cloth under the printer pickup roller area.

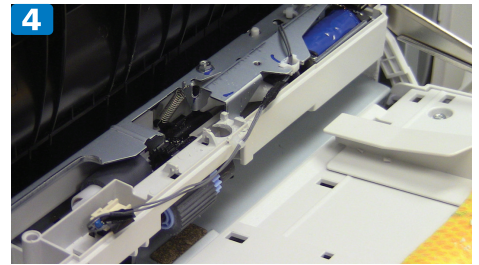
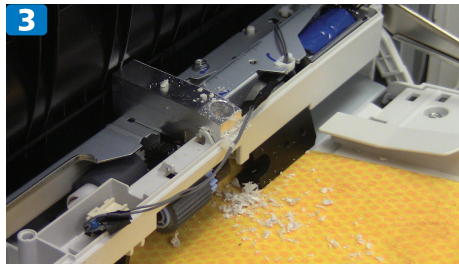
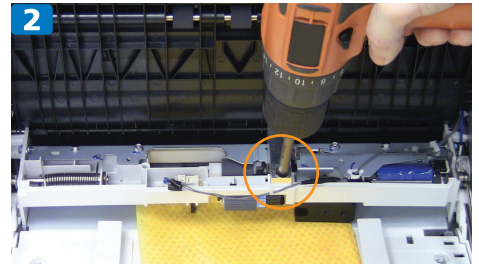
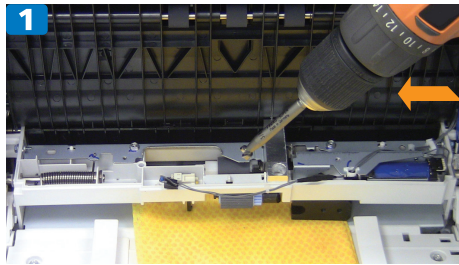
5 thru 10: Place the black stabilizer under the wing. Move the wires from two holders and gently put them in front of the tray. Place the silver template on the wing and press in place so that it is secure.



3 Drill for Sensor



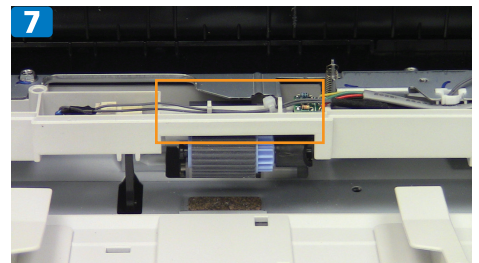
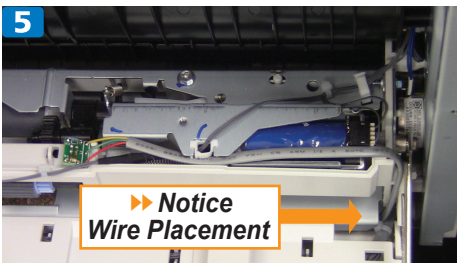
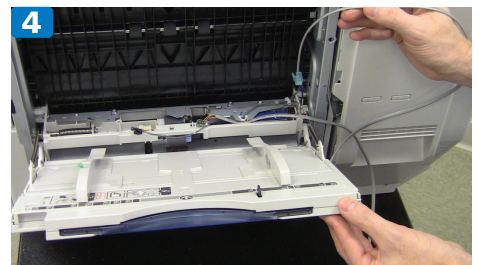
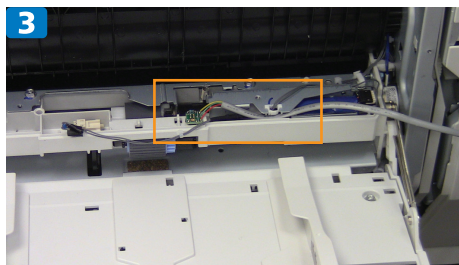
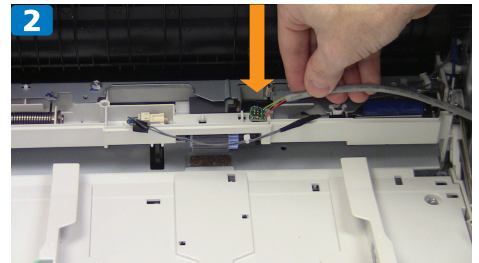
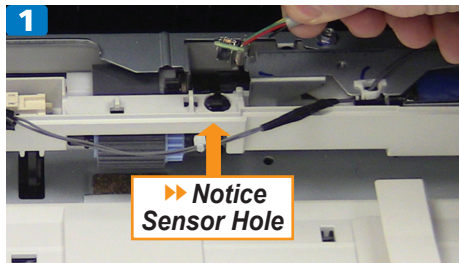
Using the supplied drill bit, place the bit into the template. **▶▶ Drill slowly through the plastic.** When the drill hole is close to going through, gently go through the rest of the white plastic. **▶▶ Do not drill into the black pickup roller arm.** Remove any plastic shavings from the work area and clean. Remove the template, stabilizer and cloth from the by-pass tray.



4 Sensor Wire



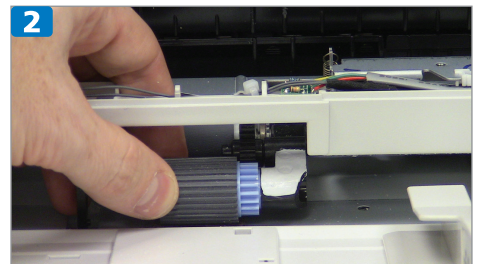
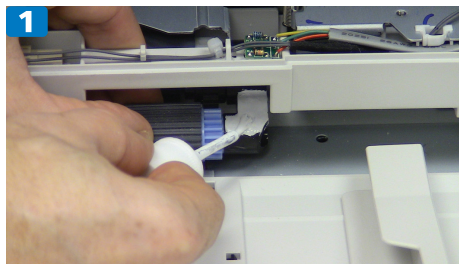
Using the supplied wire with sensor, place the sensor end into the drilled hole and press the wire under the metal at the white clip. Open the by-pass door and carefully place the wire through on the right side. **Notice the wire placement in 4.5** Move the wires from the front of the tray back into the the two holders. **Confirm the wire does not pinch by lifting the by-pass door.**



5 Reflective White Coating

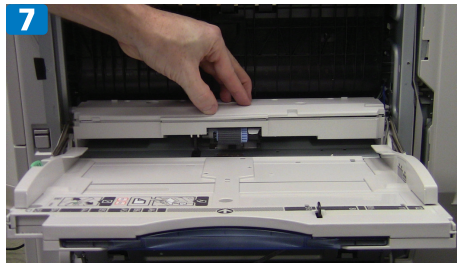
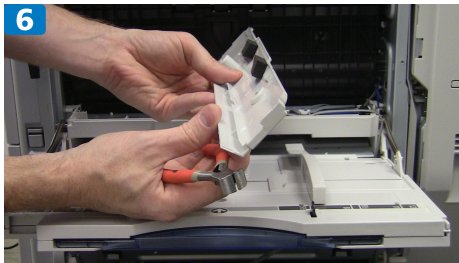
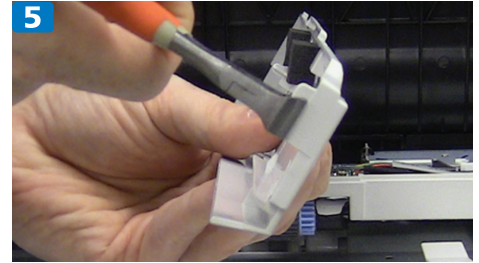
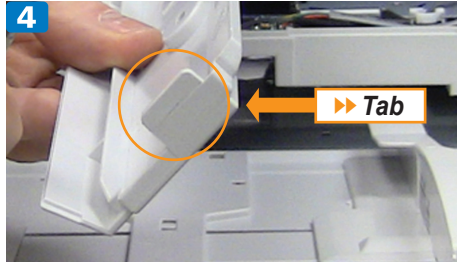
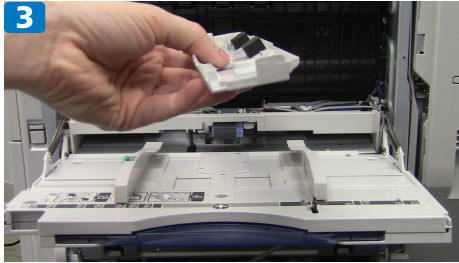
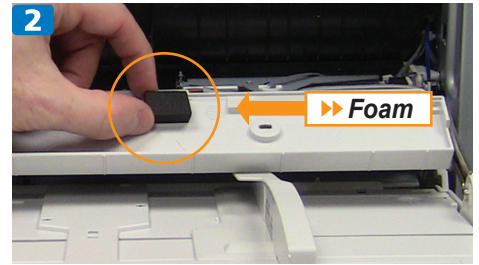
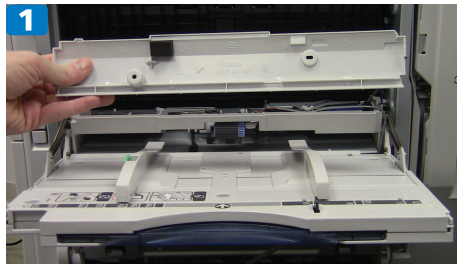


Using the supplied white coating, press down the pickup roller and apply to the top black plastic area of the arm. Allow dry time.



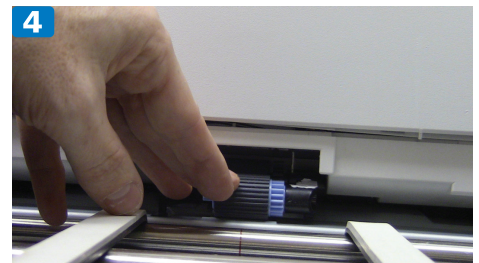
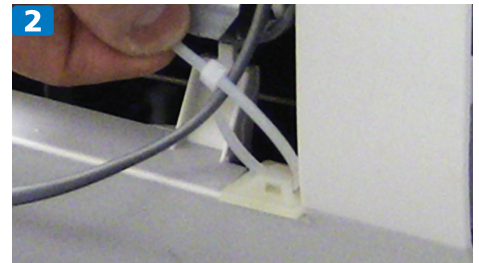
6 Duplex Cover

Using the supplied foam, turn over the by-pass tray wing and set as shown. **Notice the foam placement in 6.2** Clip the tab off the right side of the wing and screw back on.

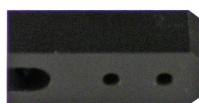


7 Communication

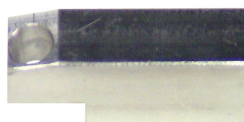
Make sure that both covers for the by-pass tray wing and the duplex cover have been properly placed on the printer. Using the supplied zip tie holder and zip tie, secure the sensor wire to the duplex cover. Plug the phone harness into the feeder port. To test the feeder, turn on and press down and release on the pickup feed roller. Each time the roller goes down then up the green and white belts on the feeder will have movement.



Supplied Items for Upgrade



Stabilizer



Template



Drill Bit



Sensor Wire



Reflective
White
Coating